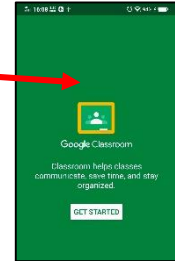


How to log in to Google Classroom using the Google Classroom app (Tablets, phones, etc).

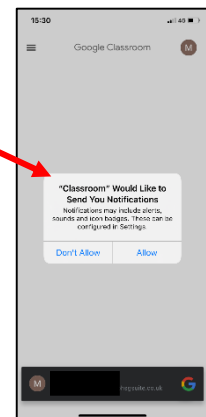
1. Download the 'Google Classroom' for free from the app store on your chosen device. Once downloaded, open the app and select 'Get started'.



2. You will then be required to sign in using your **own personal username** followed by the school's domain.

@stjosephsgsuite.co.uk

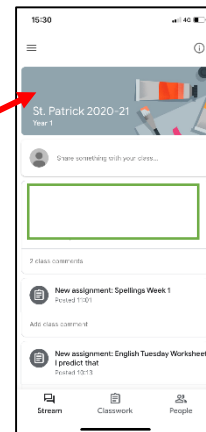
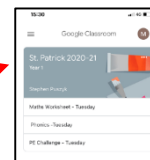
You will then be required to enter **your own unique password**. (These details were sent home on personalized letters to all children with their unique log in details). You will also be asked to enable notifications (this is optional).



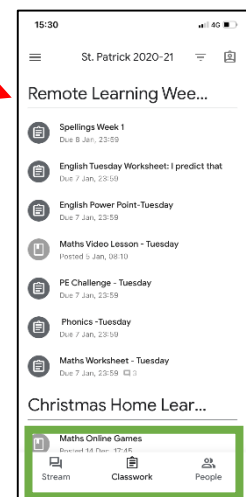
- 3.

Should you need additional access to these details please contact your class teacher who will be able to distribute them.

4. Click the class page. You will then have access to the main class page (Stream) where messages and conversations can be posted by staff and pupils.

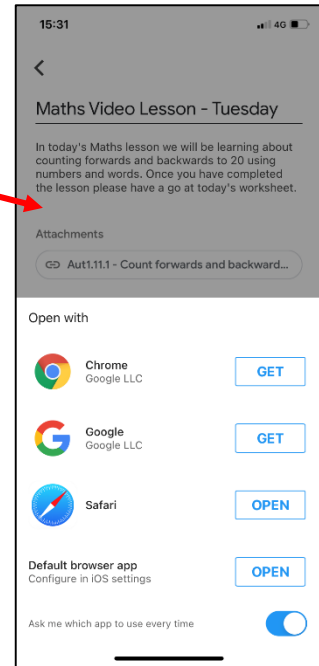


5. To access the work set by your teacher, click the 'Classwork' tab. Here you will find '**Topics**' for different subjects and **assignments set for your class**.



6. You can then select your task. Due dates are displayed for reference and once you open the tab, **attachments can be downloaded or directly worked into.**

MAKE SURE TO TURN IN YOUR WORK BEFORE CLOSING THE TAB.



7. You can navigate back to the home 'Stream' page by clicking the three stripes in the top left corner. This menu will be displayed for easy navigation back to the original page.

